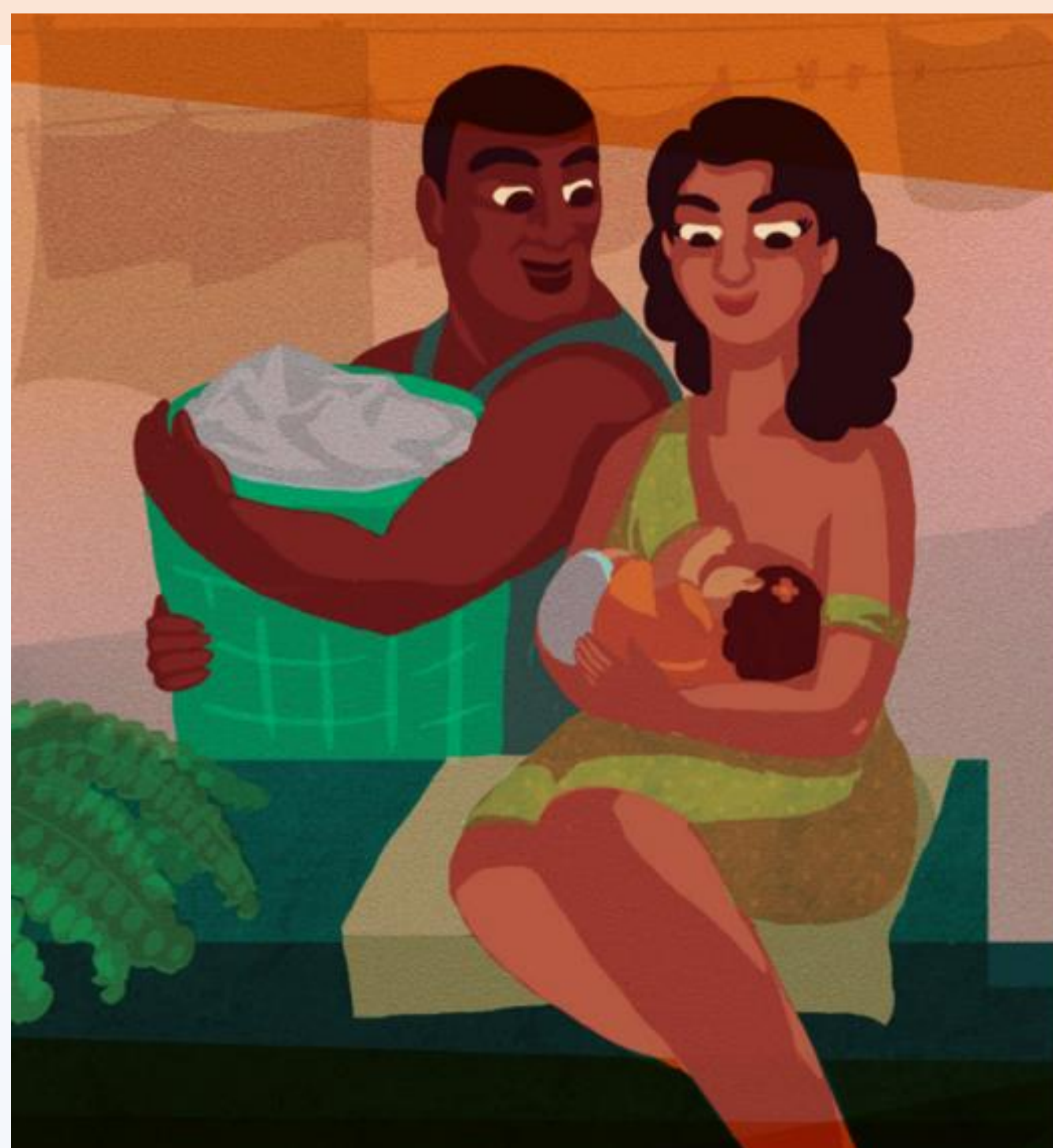


# Nutrition and Early Childhood Development in Emergencies Group

## WHY this group?

Evidence shows that nutrition in emergencies programmes with interventions to support responsive caregiving and early stimulation have a cumulative positive impact on young children's nutritional status and other development outcomes, with benefits for both child and caregiver. Good nutrition in the early years of life is vital fuel for the developing brain and an essential component for the healthy development and wellbeing of children.

Responsive feeding promotes caregiver-child interactions for optimal nutrition of infants and young children as articulated in the Nurturing Care Framework. Nutrition interventions provide affection, protection, opportunities for learning, and social interactions.



## GOAL

Children in emergencies receive the nutrition, stimulation, care, and other early childhood services for their optimal development.

## OBJECTIVES:

To advance learning agenda: engaging with country, regional, and global humanitarian actors within the nutrition sector and early development and share knowledge, practical guidance and communication on nutrition and early childhood development in humanitarian settings.

To provide technical support: providing timely responses to ad-hoc country-level requests for support on nutrition and early childhood development in emergencies, as necessary.

## PLANS FOR 2024



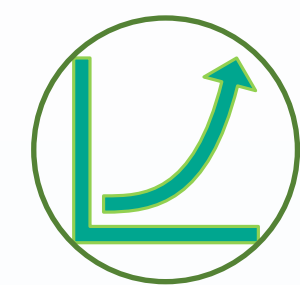
Finalised Terms of Reference, determine way forward for expanding membership of the working group



Support roll out of the 2023 WHO guidelines on the prevention and management of wasting



Assess and map the priorities of early development in NiE



Increase visibility and participate in events, building on opportunities



Collaborate and establish contacts with other Nutrition Cluster groups and other stakeholders



Develop case studies and learning from constraints and failures



Prepare overarching webinar and specific promotion of tools advancing learning agenda



Explore and provide support to the field

## KEY RESOURCES AND TECHNICAL SUPPORT AVAILABLE



[Quick Guide on ECD in NiE](#)

## MEMBERSHIP

ACF-Ca/GNC and UNICEF Chairs Andi Kendle, Eduardo Garcia Rolland Colleen Emary World Vision; Adugna Yimam Action Against Hunger-US; Andrea Garcia Save the Children; Antonio Vargas Action Against Hunger-Spain; Katie Murphy International Rescue Committee. Open to new members

For more information:

Andi Kendle [akendle@actionagainsthunger.ca](mailto:akendle@actionagainsthunger.ca); Eduardo Garcia Rolland [erolland@unicef.org](mailto:erolland@unicef.org)